



SMARTCAP

SMARTCAP





**SMARTCAP**<sup>®</sup>  
BUILD YOUR BIN TO FIT YOUR LIFE.

THE WORLD'S FIRST  
**MODULAR**  
 TRUCK CAP SYSTEM



SmartCap is the world's first modular stainless steel truck cap system. From its 5-piece modular design to its seamlessly integrated Components, SmartCap lets you build and organize your truck bed exactly how you want it.



DELIVER TO YOUR DOOR



OR AUTHORIZED DEALER



INSTALL IN UNDER 2 HOURS



**ENGINEERED TO CARRY THE LOAD**

SmartCap carries an evenly distributed load of 349 kg. Static/150 kg. Dynamic\*



**Universal Roof Rails:** Mount up your roof rack or ours.



**Larger Gullwing Opening:** ~17% larger than most fiberglass openings.



**Weatherproof:** Innovative sealing method keeps the rain out.



**Positive Pressure Air Vent:** Pressurizes the bed to help keep dust out.

\* With some applications, SmartCap's load capacity may exceed that of your truck's bed. Please consult your Owner's Manual to avoid damaging your truck or voiding your warranty.

Built like a truck, **not like a boat.**



**EVO SPORT**



The SmartCap EVO Sport is the world's first modular designed "you-build-it" truck cap. Forged from stainless steel (not fiberglass)... could make one think it's built like a truck, not a boat.



**WEATHER PROOF**



**STAINLESS STEEL**



**EASY REMOVAL**



**3 YEAR WARRANTY**



**STANDARD FRONT SLIDER\*\***

Easy access to your cargo from the cab.



**SIDE WINDOWS**

3 latching positions to ventilate the truck bed.



**PORTAL WINDOW**

Let's your cargo light illuminate the bed. (FULL-SIZE TRUCK APPLICATIONS)



**BONDED GLASS**

Formed to enhance the aesthetic design.

\*Not available for 2023+ Ford Ranger or VW Amarok. \*\*Not available for 2010-2022 VW Amarok.

Forged for **adventure.**



# EVOa ADVENTURE

The SmartCap EVOa Adventure is built for extreme on-road and off-road use. From the double-walled stainless steel Gullwing doors to the interior MOLLE panels for mounting your gear, this thing will take all the adventure you can throw at it — and then some.



WEATHER PROOF



STAINLESS STEEL



EASY REMOVAL



3 YEAR WARRANTY



**Standard Front Slider\*\***

Easy access to your cargo from the cab.

**Steel Gullwing Doors**

Rugged double-walled stainless steel doors.



**MOLLE Panel**

Stow and organize your gear.

**Third Brake Light\***

A real attention grabber.



\*Not available for 2023+ Ford Ranger or VW Amarok. \*\*Not available for 2010-2022 VW Amarok.

Commercial grade, modular design.



# EVOc COMMERCIAL

The SmartCap® EVOc Commercial is a brilliantly engineered truck bed cap system. The stainless steel construction and optional Security Screen provide incredible protection for your truck bed. Plus, with SmartCap Components you can build the ultimate truck for your needs.



WEATHER PROOF



STAINLESS STEEL



EASY REMOVAL

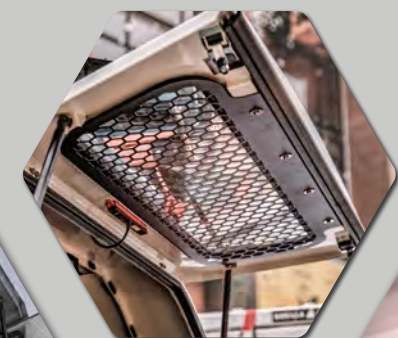


3 YEAR WARRANTY



**MOLLE Panels**  
Stow and Organize your gear.  
(OPTIONAL)

**SmartCap Components**  
Organize your gear the way you want it.  
(OPTIONAL)



**Security Screen\*\***  
Adds a layer of protection for your EVO Series Cap.  
(OPTIONAL)



**Portal Window**  
Let your truck's cargo light illuminate the bed.  
(FULL-SIZE TRUCKS ONLY)

\* Not Available for the 2023+ Ford Ranger or VW Amarok. \*\* Security screen is shown in white, actual screen is black.



Built for hauling hay or surviving the apocalypse. **Your choice.**



# BED REPLACEMENT

The SmartCap® Bed Replacement System is built to take heavy-duty abuse while still delivering the ultimate in truck bed organization. From the frame up, it's designed to maximize the space.

Image shown above is with a SmartCap XL that adds 2.1 m<sup>3</sup> of protected storage.



**Flat Bed:** Comes with a headache rack, stainless steel deck & plenty of storage.



**Adventure Rack:** Great for mounting a Rooftop Tent, Kayak—you name it.



**Drop Sides:** Drop 'em down to load the flat bed, put 'em up to contain the load.



**Get To It**

Massive side doors let you access the entire bed.

**Maximum Storage**

Built-in bins and heavy-duty slider drawer.



**Rear Storage Drawer**

Organize and stow gear or add a Kitchen-Drawer.



**Mount Up**

Integrated Universal Roof Rails let you mount up.





SMARTCAP®



### Kitchen-Bin

Turn your truck bed into a chuck wagon.  
[Does not include stove]



### Drawer-Bin

Multiple drawers and storage bins let you  
organize and safely store tools and equipment.



### Half-Bin & Full-Bin

Fills half or all of the opening. Organize  
and stow gear w/integrated MOLLE panels.

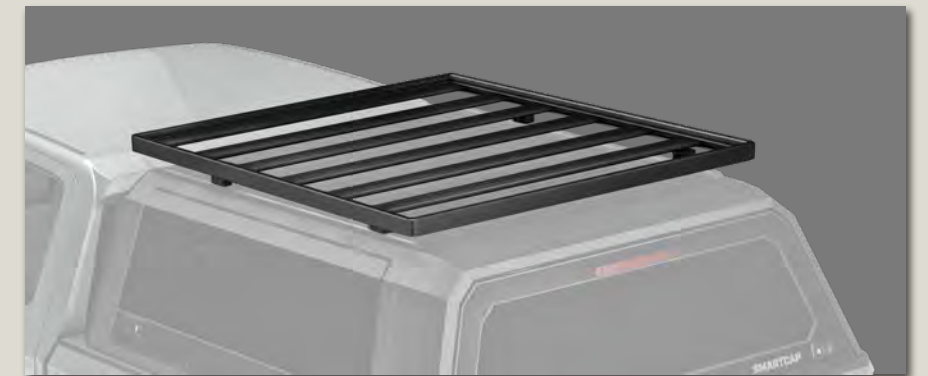
# Gullwing Components

From our Kitchen-Bin to our Drawer-Bin, Full or Half-Bin, SmartCap Gullwing Components let you build and organize your truck bed to fit your life.



**Drop Rack**

The drop-down platform w/Load Assist is like having an extra set of hands. (Driver's side only)



**Platform Rack**

Large surface with t-slots giving you infinite cargo tie-down points.



**Roller Rack**

Integrated rollers/tie-downs make the loading and unloading of cargo a snap.



**Load Bars**

Compact, lightweight roof rack solution for mounting a rooftop tent, kayaks, bikes — you name it.

# Rack Components

Whether you're a contractor, overlander, or weekend warrior looking to mount cargo on top of your SmartCap, we have several different rack options for you to choose from.



**StowAway Table**

Table slides into a precision fit bracket mounted into the interior roof of your SmartCap.



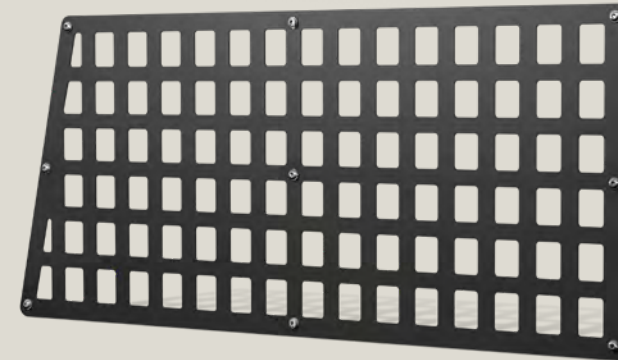
**Flame**

Combo Fire/BBQ Pit, stores in an included compact case.



**Security Screen**

Add an extra layer of protection to the rear window of your EVO Series Cap.



**MOLLE Panel**

Organize your gear. Mounts to the inside of the EVOc Commercial Gullwing Doors.



**TORCH**

Magnetically mounts & cranks out 500 Lumens of light right where you need it.

# Other Components

With SmartCap, we set out to build a smarter bed. One that stows a handy table in its lid or lets you magnetically mount a light anywhere you need it.



# SMARTCAP.COM

Contact Us at [Support.SA@SmartCap.com](mailto:Support.SA@SmartCap.com)

When ordering Caps and Components for vehicles still under the manufacturer's warranty, it is the vehicle owner's responsibility to ensure that the warranty will not be adversely affected by the installation of these parts. If in doubt, please consult your owner's manual, or contact your local servicing dealership or the vehicle manufacturer before ordering.

© 2023 SMARTCAP is a registered trademark.